



WG Coaxial Adapters

- ◆ Wide variety
- ◆ Low VSWR
- ◆ Excellent reliability



Specifications:

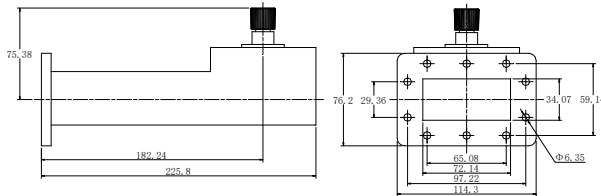
Model	Frequency range (GHz)	VSWR (Max)	Connector	WG flange	Coaxial adapter type
GPWGA101	2.6 - 3.95	1.15	WR284	FDP32	APC-7
GPWGA102	2.6 - 3.95	1.15	WR284	FDP32	N(F)
GPWGA103	2.6 - 3.95	1.15	WR284	FDP32	N(M)
GPWGA104	3.94 - 6	1.15	WR187	FDP48	APC-7
GPWGA105	3.94 - 6	1.15	WR187	FDP48	N(F)
GPWGA106	3.94 - 6	1.15	WR187	FDP48	N(M)
GPWGA107	4.64 - 7.05	1.15	WR159	FDP58	APC-7
GPWGA108	4.64 - 7.05	1.15	WR159	FDP58	N(F)
GPWGA109	4.64 - 7.05	1.15	WR159	FDP58	N(M)
GPWGA110	5.88 - 8.17	1.15	WR137	FDP70	APC-7
GPWGA111	5.88 - 8.17	1.15	WR137	FDP70	N(F)
GPWGA112	5.88 - 8.17	1.15	WR137	FDP70	N(M)
GPWGA113	7 - 10	1.20	WR112	FBP84	APC-7
GPWGA114	7 - 10	1.20	WR112	FBP84	N(F)
GPWGA115	7 - 10	1.20	WR112	FBP84	N(M)
GPWGA116	8 - 12.4	1.20	WR90	FBP100	APC-7
GPWGA117	8 - 12.4	1.20	WR90	FBP100	N(F)
GPWGA118	8 - 12.4	1.20	WR90	FBP100	N(M)
GPWGA119	10 - 15	1.20	WR75	FBP120	APC-7
GPWGA120	10 - 15	1.20	WR75	FBP120	N(F)
GPWGA121	10 - 15	1.20	WR75	FBP120	N(M)
GPWGA122	12 - 18	1.20	WR62	FBP140	APC-7
GPWGA123	12 - 18	1.20	WR62	FBP140	N(F)
GPWGA124	12 - 18	1.20	WR62	FBP140	N(M)
GPWGA125	18 - 26.5	1.20	WR42	FBP220	3.5mm (F)

Continued

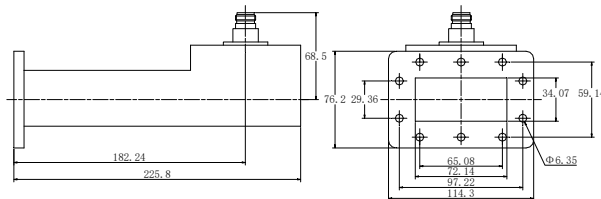
Model	Frequency range (GHz)	VSWR (Max)	Connector	WG flange	Coaxial adapter type
GPWGA126	18 - 26.5	1.20	WR42	FBP220	3.5mm (M)
GPWGA127	26.5 - 40	1.20	WR28	FBP320	2.4mm (F)
GPWGA128	26.5 - 40	1.20	WR28	FBP320	2.4mm (M)
GPWGA129	33 - 50	1.25	WR22	FAP400	2.4mm (F)
GPWGA130	40 - 60	1.30	WR19	FAP500	1.85mm (F)
GPWGA131	2.5 - 7.5	1.30	WRD250	FLG250-1-C	N(F)
GPWGA132	7.5 - 18	1.30	WRD750	FLG750-1-C	N(F)
GPWGA133	22 - 33	1.12	WR34	FBP260	2.92mm (F)
GPWGA134	26.5 - 40	1.20	WR28	FBP320	2.92mm (F)
GPWGA135	26.5 - 40	1.20	WR28	FBP320	2.4mm (F)
GPWGA136	33 - 50	1.25	WR22	FAP400	2.4mm (F)
GPWGA137	40 - 60	1.30	WR19	FAP500	1.85mm (F)
GPWGA138	50 - 67	1.30	WR15	FAP620	1.85mm (F)

Dimensions:

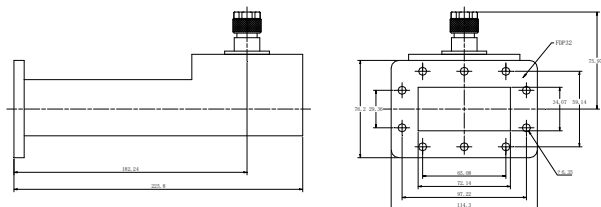
GPWGA101



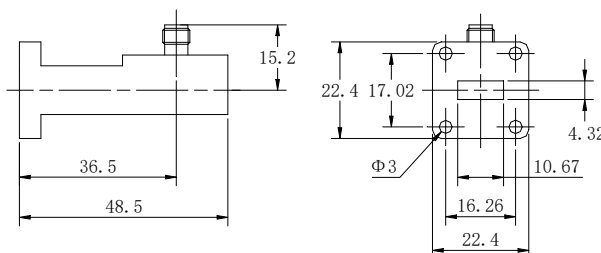
GPWGA102



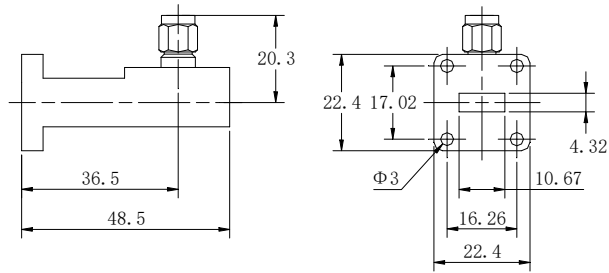
GPWGA103



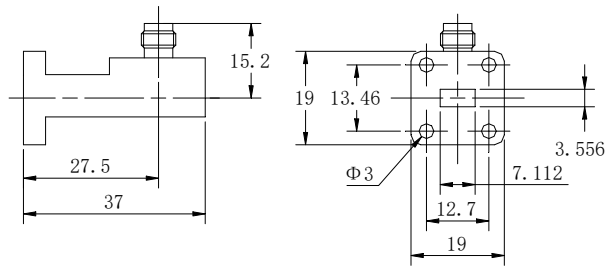
GPWGA125



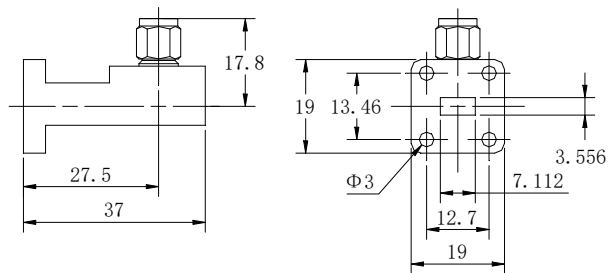
GPWGA126



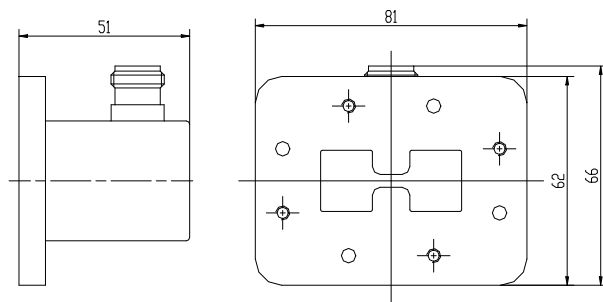
GPWGA127



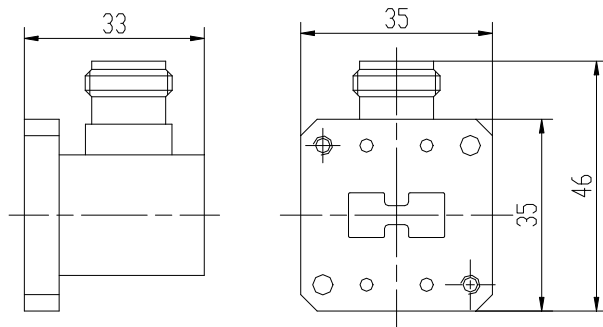
GPWGA128



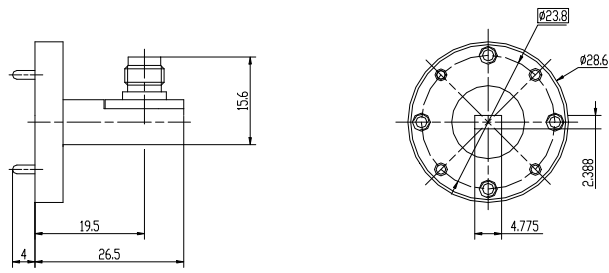
GPWGA131



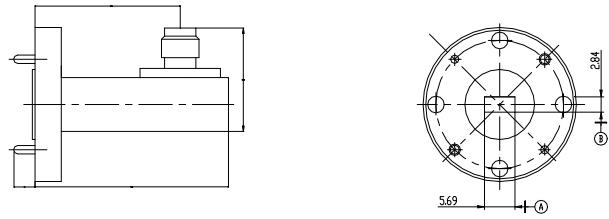
GPWGA132



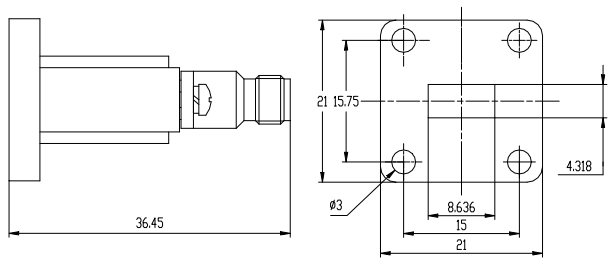
GPWGA130



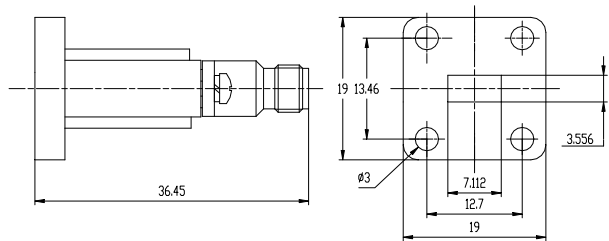
GPWGA129



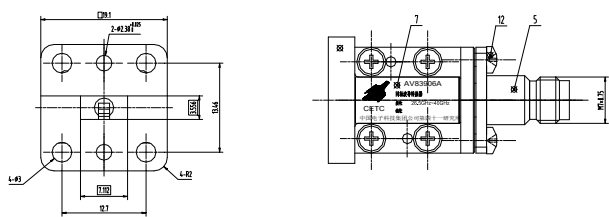
GPWGA133



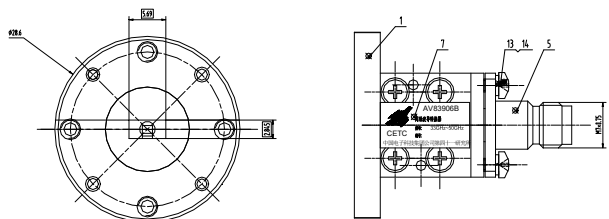
GPWGA134



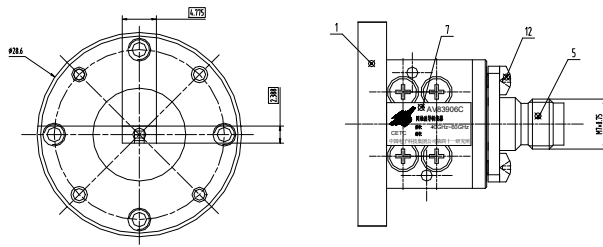
GPWGA135



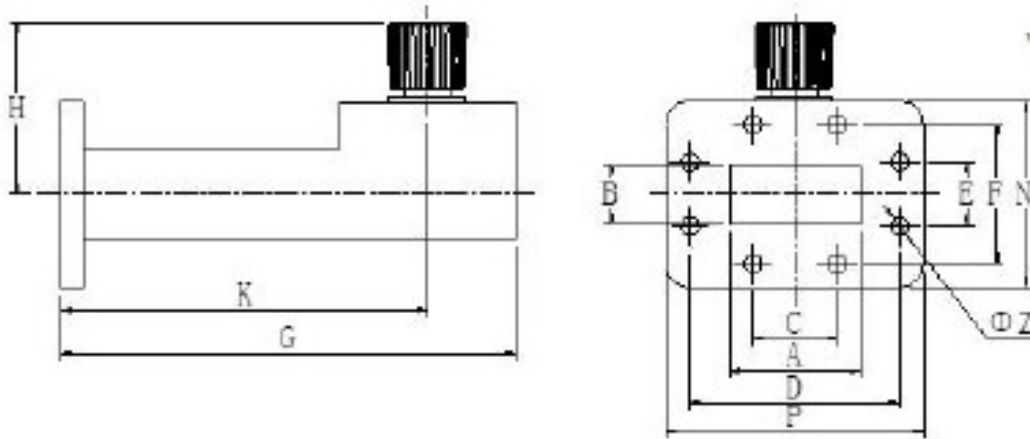
GPWGA136



GPWGA137

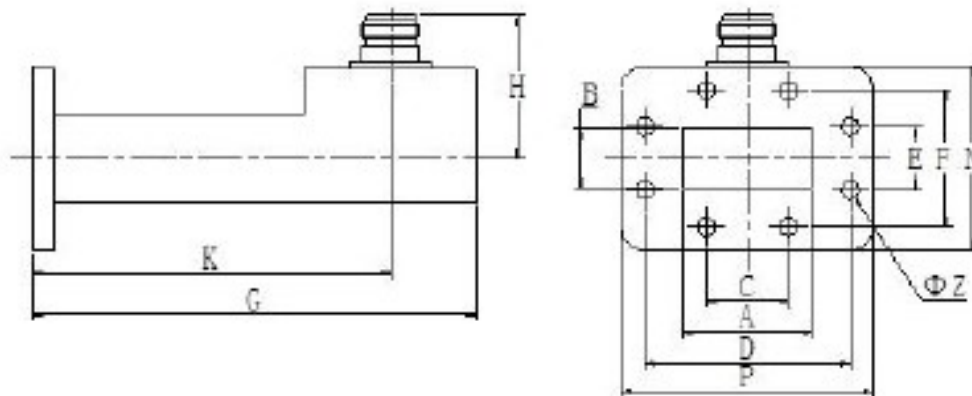


GPWGA104, GPWGA107, GPWGA110



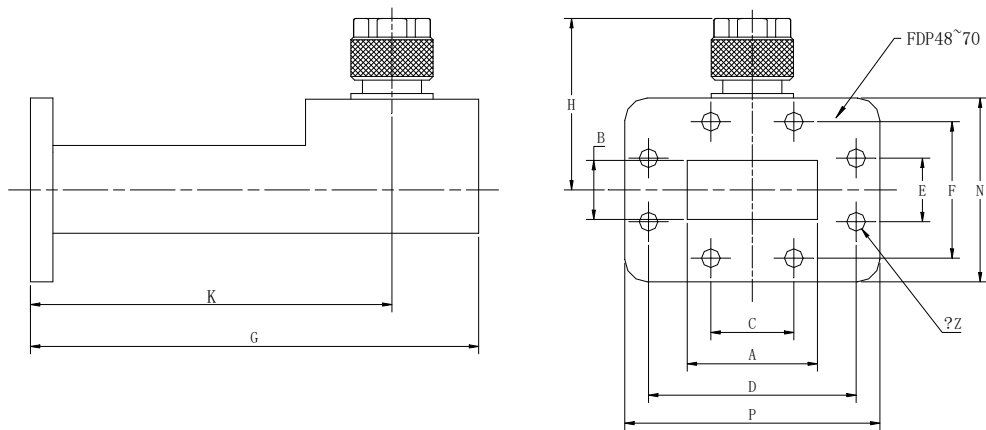
Models	A (mm)	B (mm)	C (mm)	D (mm)	E (mm)	F (mm)	G (mm)	H (mm)	K (mm)	N (mm)	P (mm)	Z (mm)
GPWGA104	47.55	22.15	28.58	71.82	22.22	46.44	150	50.93	122.87	63.5	88.9	6.35
GPWGA107	40.39	20.19	25.4	64.66	19.04	44.46	126	43.6	99.7	61.9	81.0	6.35
GPWGA110	34.85	15.8	22.22	55.58	15.88	36.52	120	45.28	96.8	49.2	68.3	5.00

GPWGA105, GPWGA108, GPWGA111



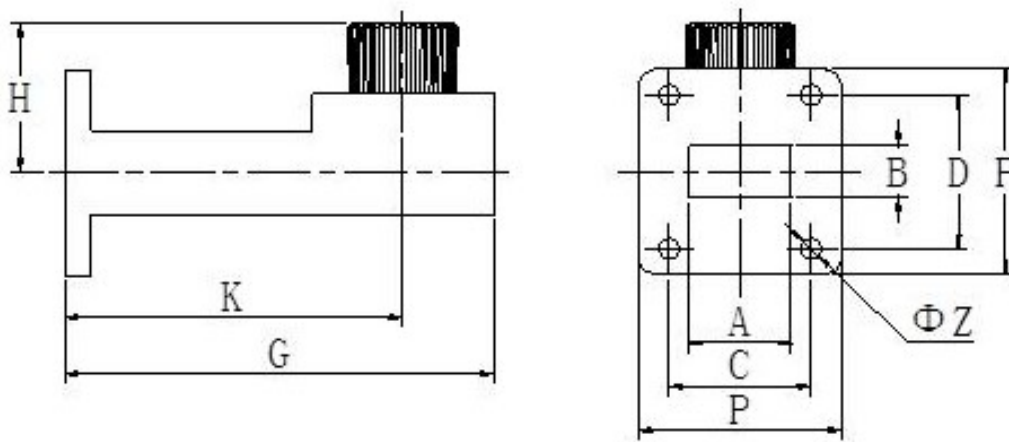
Models	A (mm)	B (mm)	C (mm)	D (mm)	E (mm)	F (mm)	G (mm)	H (mm)	K (mm)	N (mm)	P (mm)	Z (mm)
GPWGA105	47.55	22.15	28.58	71.82	22.22	46.44	150	50.4	122.87	63.5	88.9	6.35
GPWGA108	40.39	20.19	25.4	64.66	19.04	44.46	126	36.7	99.7	61.9	81.0	6.35
GPWGA111	34.85	15.8	22.22	55.58	15.88	36.52	120	38.4	96.8	49.2	68.3	5.00

GPWGA106, GPWGA109, GPWGA112



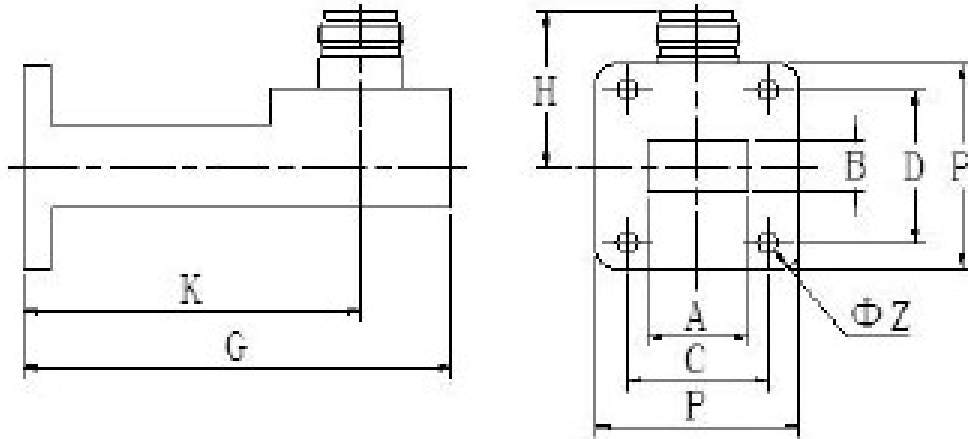
Models	A (mm)	B (mm)	C (mm)	D (mm)	E (mm)	F (mm)	G (mm)	H (mm)	K (mm)	N (mm)	P (mm)	Z (mm)
GPWGA106	47.55	22.15	28.58	71.82	22.22	46.44	150	54.9	122.87	63.5	88.9	6.35
GPWGA109	40.39	20.19	25.4	64.66	19.04	44.46	126	44.2	99.7	61.9	81.0	6.35
GPWGA112	34.85	15.8	22.22	55.58	15.88	36.52	120	45.9	96.8	49.2	68.3	5.00

GPWGA113, GPWGA116, GPWGA119, GPWGA122



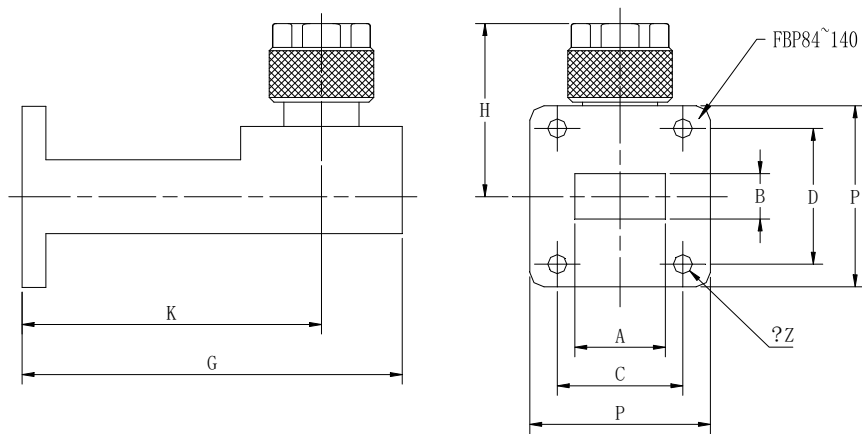
Models	A (mm)	B (mm)	C (mm)	D (mm)	G (mm)	H (mm)	K (mm)	P (mm)	Z (mm)
GPWGA113	28.50	12.62	34.34	37.44	107.5	30.1	87.5	47.8	4.17
GPWGA116	22.86	10.16	30.99	32.51	84.5	30.2	66.16	41.4	4.17
GPWGA119	19.05	9.53	26.42	28.50	80	27.6	63	38.0	4.00
GPWGA122	15.80	7.90	25.25	24.28	77.5	28	59.9	33.3	4.00

GPWGA114, GPWGA117, GPWGA120, GPWGA123



Models	A (mm)	B (mm)	C (mm)	D (mm)	G (mm)	H (mm)	K (mm)	P (mm)	Z (mm)
GPWGA114	28.50	12.62	34.34	37.44	107.5	31.4	87.5	47.8	4.17
GPWGA117	22.86	10.16	30.99	32.51	84.5	30.2	66.16	41.4	4.17
GPWGA120	19.05	9.53	26.42	28.50	80	28.9	63	38.0	4.00
GPWGA123	15.80	7.90	25.25	24.28	77.5	29.6	59.9	33.3	4.00

GPWGA115, GPWGA118, GPWGA121, GPWGA124



Models	A (mm)	B (mm)	C (mm)	D (mm)	G (mm)	H (mm)	K (mm)	P (mm)	Z (mm)
GPWGA115	28.50	12.62	34.34	37.44	107.5	31.4	87.5	47.8	4.17
GPWGA118	22.86	10.16	30.99	32.51	84.5	30.2	66.16	41.4	4.17
GPWGA121	19.05	9.53	26.42	28.50	80	36.4	63	38.0	4.00
GPWGA124	15.80	7.90	25.25	24.28	77.5	29.6	59.9	33.3	4.00

The unit is mm; there will be no notice if any change.